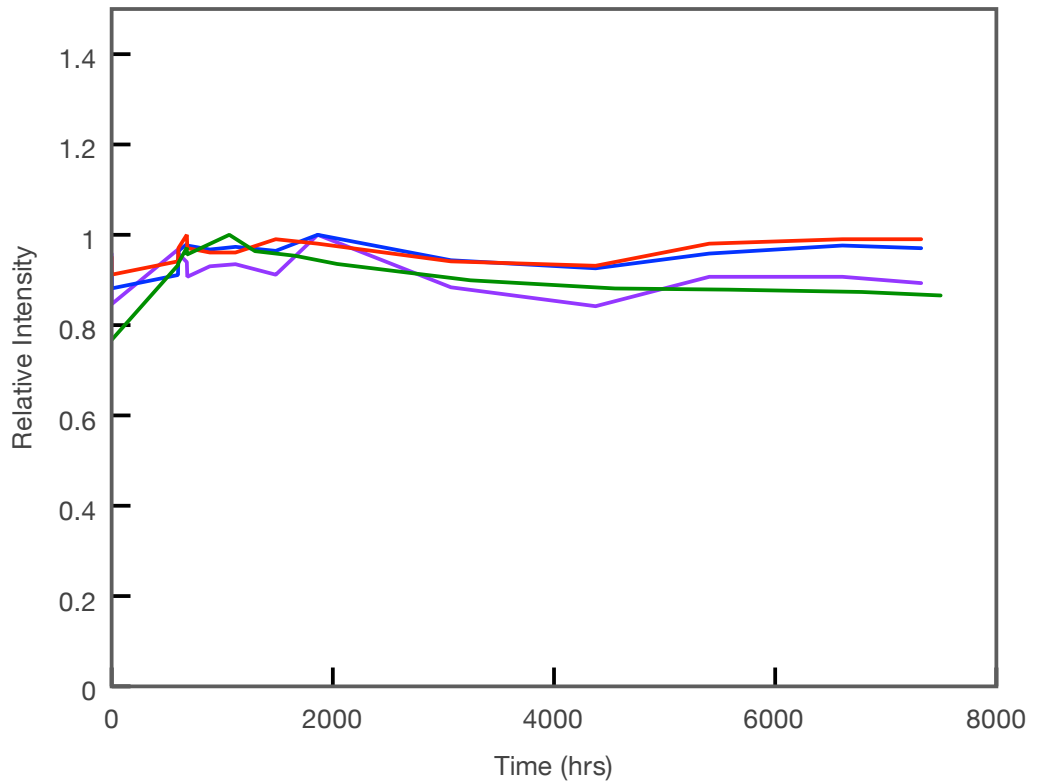


April 2010

lifetime



## Greater Stability than Lamps or Lasers plus power, purity, robustness, long lifetime

ILLUMINATOR	SOURCES	MANUFACTURER GUARANTEED LIFETIME, HR	TYPICAL DEGRADATION TO 80% I <sub>0</sub> , HR	SHORT TERM STABILITY, % PK-PK NOISE
Lumencor® light engine	hybrid of solid state	> 10,000	> 7500	~0.05
EXFO® X-cite <i>exacte</i>	mercury halide	2000	~ 500	~ 12